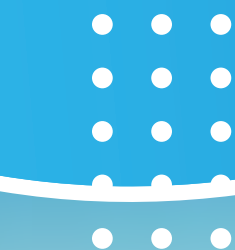


IB Career-related Programme (CP) eSeminar



International Baccalaureate®
Baccalauréat International
Bachillerato Internacional

**Venue:**

Online (Microsoft Teams)

Date:

20 May 2021, Thursday

Time:

4.30pm to 6pm Japan time

The IB Career-related Programme (CP) is a framework of international education that incorporates the vision and educational principles of the IB into a unique programme specifically developed for students who wish to engage in career-related learning. The CP's three-part framework comprises the study of at least two Diploma Programme (DP) courses alongside the distinctive CP core and a career-related study. CP students engage with a rigorous study programme that genuinely interests them while gaining transferable and lifelong skills. The programme leads to further/higher education, apprenticeships or employment pathways for students and in the process preparing them for life.

This eSeminar is ideal for schools in Japan seeking information about the implementation of the CP. The online seminar will include an overview of the sharing of the CP framework and potential career-related study options offered by professional provider. With better understanding, schools will be able to assess the possibility of offering the CP for students who wish to engage in career-related education.

CLICK HERE TO REGISTER

Please contact ibapdevelopment@ibo.org if you have any queries

Please find below for the program schedule:

Time (Japan time, GMT+9)	Topic
4.30pm – 4.50pm	<p><i>Session will be delivered in English and Japanese</i></p> <p>About the IB Career-related Programme: Comprehensive educational framework with career-related learning</p> <p>Ayumi Hoshino Development Manager, Japan</p> <p>Peiwen Cheong Development Manager, Asia Pacific</p>
	Q&A session
4.50pm – 5.10pm	<p><i>Session will be delivered in English</i></p> <p>Guest speaker session – Career-related study on International Sports Management</p> <p>World Academy of Sport (WAoS)</p>
5.10pm – 5.30pm	<p><i>Session will be delivered in English and Japanese</i></p> <p>Guest speaker session – Career-related study on BTEC International Diploma in Sports (in Japanese)</p> <p>Pearson and Football Samurai Academy Ltd</p>
	Q&A session
5.30pm – 5.50pm	<p><i>Session will be delivered in English with Japanese subtitled introduction</i></p> <p>Guest speaker session – Career-related study on Business and Hospitality Studies</p> <p>VIE, Swiss Education Group</p>
	Q&A session